

WELL STATUS RECORD

WELL TYPE: SAMPLE

ORTE:

TOWER NO: SAMPLE

SLOT NUMBER: SAMPLE

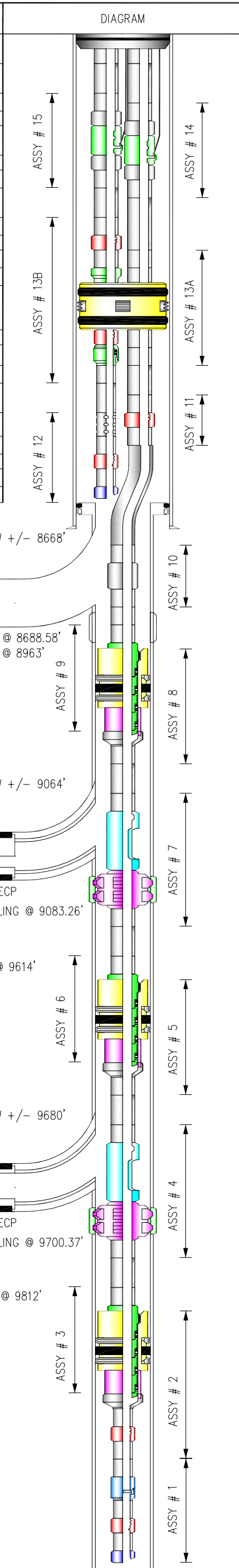
RIG: SAMPLE

WELL NO: SAMPLE

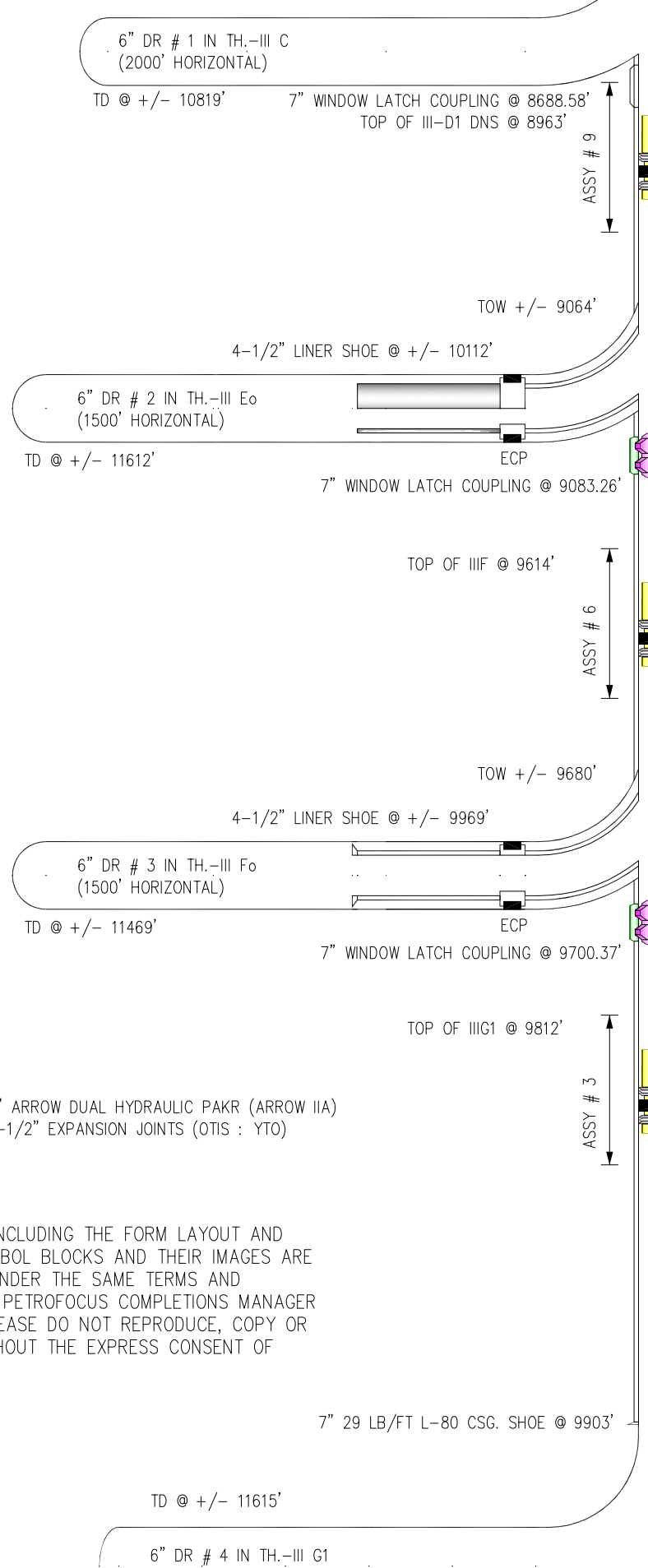
RUN DATE:

W/O DATE:

DEPTH (ft)	LENGTH (ft)	OD (in)	ID (in)	DESCRIPTION
		3.862	2.992	CROSSOVER 3-1/2" x 3-1/2" NK3SB PIN x PIN
		3.862	2.992	TUBING 3-1/2" NK3SB L-80 13% Cr.
		3.862	2.992	TUBING PUP JOINT 3-1/2" 5 FT
		3.862	2.992	FLOW COUPLING 3-1/2" NEW VAM 13% Cr
		4.632	2.813	SCSSV LANDING NIPPLE 2.813" OTIS "XXO"
		3.862	2.992	FLOW COUPLING 3-1/2" NEW VAM 13% Cr
		3.862	2.992	TUBING PUP JOINT 3-1/2" 5 FT
		3.862	2.992	TUBING 3-1/2" NK3SB L-80 13% Cr.
		3.862	2.992	TUBING PUP JOINT 3-1/2" 5 FT
		3.862	2.813	LANDING NIPPLE 2.813" OTIS "X"
		3.862	2.992	TUBING PUP JOINT 3-1/2" 10 FT
			2.375	CLU COLLET CATCH 3.750" SEALS
7817	8.300	2.347		DUAL PACKER 9-5/8" DOT "RHD"
		3.800	2.250	LANDING NIPPLE 2.313" DOT "X"
		3.260	2.441	SWIVEL SUB 2-7/8" DOT NEW VAM L-80 13% Cr.
		3.197	2.441	PUP JOINT 2-7/8" NEW VAM 5 FT
		3.197	2.441	TUBING 2-7/8" NEW VAM L-80 13% Cr.
		3.197	2.441	PERFORATED JOINT 2-7/8" NEW VAM 3 FT
		3.197	2.441	PUP JOINT 2-7/8" NEW VAM 10 FT
		3.250	2.250	LANDING NIPPLE 2.313" OTIS "XN"
		3.197	2.441	PUP JOINT 2-7/8" NEW VAM 10 FT
7897				WIRELINE ENTRY GUIDE 2-7/8" X-PIN



DESCRIPTION	ID (in)	OD (in)	LENGTH (ft)	DEPTH (ft)
TUBING HANGER SEGMENT 9-5/8" x 3/12" DC-BS	2.992	11.00		
CROSSOVER 3-1/2" x 3-1/2" NK3SB PIN x PIN	2.992	3.862		
TUBING 3-1/2" NK3SB L-80 13% Cr.	2.992	3.862		
TUBING PUP JOINT 3-1/2" 5 FT	2.992	3.862		
FLOW COUPLING 3-1/2" NEW VAM 13% Cr	2.992	3.862		
SCSSV LANDING NIPPLE 2.813" OTIS "XXO"	2.813	4.632		
FLOW COUPLING 3-1/2" NEW VAM 13% Cr	2.992	3.862		
TUBING PUP JOINT 3-1/2" 5 FT	2.992	3.862		
TUBING 3-1/2" NK3SB L-80 13% Cr.	2.992	3.862		
PUP JOINT 3-1/2" NEW VAM L-80 13% Cr.	2.992	3.862		
RETRIEVABLE HYDRAULIC DUAL PACKER WITH SCOOPHEAD AND INTERLOCK 9-5/8" x 3-1/2" x 2-7/8" DOT "RHD" "HNBR" ELEMENTS.	2.992	8.300		
TUBING PUP JOINT 3-1/2" NEW VAM 5 FT	2.992	3.862		
TUBING 3-1/2" NEW VAM L-80 13% Cr.	2.992	3.862		
TUBING PUP JOINT 3-1/2" NEW VAM 5 FT	2.992	3.862		
LANDING NIPPLE 2.813" OTIS "X"	2.813	3.862		
PUP JOINT 3-1/2" NEW VAM 5 FT	2.992	3.862		
TUBING 3-1/2" NK3SB L-80 13% Cr.	2.992	3.862		
PUP JOINT 3-1/2" NEW VAM 5 FT	2.992	3.862		
BLAST JOINT 3-1/2" NEW VAM 30 FT	2.992	3.862		
PUP JOINT 3-1/2" NEW VAM 5 FT	2.992	3.862		
TUBING 3-1/2" NEW VAM	2.992	3.862		
TUBING PUP JOINT 3-1/2" NEW VAM 5 FT	2.992	3.862		
SEAL ELEMENTS (4 UNITS) 15 FT	2.992	4.000		
PERMANENT RETRIEVABLE PACKER 7" "TL"	4.000			8978
SEALBORE EXTENSION 10 FT				
CROSSOVER 5" x 3-1/2" NEW VAM BOX x PIN	2.992	5.000		
TUBING PUP JOINT 3-1/2" NEW VAM 5 FT	2.992	3.862		
TUBING 3-1/2" NEW VAM	2.992	3.862		
TUBING PUP JOINT 3-1/2" NEW VAM 5 FT	2.992	3.862		
SSDS "LRS-P2" WINDOW C/W 2.750" (TOP NO-GO) ISOLATION SLEEVE				
TUBING PUP JOINT 3-1/2" NEW VAM 5 FT	2.992	3.862		
TUBING 3-1/2" NEW VAM	2.992	3.862		
TUBING PUP JOINT 3-1/2" NEW VAM 5 FT	2.992	3.862		
SEAL ELEMENTS (4 UNITS) 15 FT	2.992	4.000		
PERMANENT RETRIEVABLE PACKER 7" "TL"	4.000			9630
SEALBORE EXTENSION 10 FT				
CROSSOVER 5" x 3-1/2" NEW VAM BOX x PIN	2.992	5.000		
PUP JOINT 3-1/2" NEW VAM 5 FT	2.992	3.862		
TUBING 3-1/2" NEW VAM	2.992	3.862		
TUBING PUP JOINT 3-1/2" NEW VAM 5 FT	2.992	3.862		
SSDS "LRS-P2" WINDOW C/W 2.750" (TOP NO-GO) ISOLATION SLEEVE				
TUBING PUP JOINT 3-1/2" NEW VAM 5 FT	2.992	3.862		
TUBING 3-1/2" NEW VAM	2.992	3.862		
TUBING PUP JOINT 3-1/2" NEW VAM 5 FT	2.992	3.862		
SEAL ELEMENTS (4 UNITS) 12 FT	2.992	4.000		
PERMANENT PACKER 7" "TIW JEPR" 14.5 FT 4" BORE	4.000		14.5	9822
SEALBORE EXTENSION 12 FT				
CROSSOVER 3-1/2" x 2-7/8" NEW VAM BOX x PIN	2.441	3.862		
TUBING PUP JOINT 2-7/8" NEW VAM 10 FT	2.441	3.197		
LANDING NIPPLE 2.313" OTIS "X"	2.250	3.260		
PUP JOINT 2-7/8" NEW VAM L-80 13% Cr. 5 FT	2.441	3.197		
PUP JOINT 2-7/8" NEW VAM L-80 13% Cr. 10 FT	2.441	3.197		
GLASS DISK SUB NEW VAM (4500 PSI SHEAR)				
PUP JOINT 2-7/8" NEW VAM L-80 13% Cr. 5 FT	2.441	3.197		
LANDING NIPPLE 2.313" OTIS "XN"	2.250	3.260		
PUP JOINT 2-7/8" NEW VAM 5 FT	2.441	3.197		
WIRELINE ENTRY GUIDE ECCENTRIC 2-7/8"	2.950	3.919		



REMARKS *
 BACK-UP 9-5/8" ARROW DUAL HYDRAULIC PAKR (ARROW IIA)
 WITH 2 No. OF 3-1/2" EXPANSION JOINTS (OTIS : YTO)

NOTE:
 THIS SAMPLE, INCLUDING THE FORM LAYOUT AND EQUIPMENT SYMBOL BLOCKS AND THEIR IMAGES ARE COPYRIGHTED UNDER THE SAME TERMS AND CONDITIONS AS PETROFOCUS COMPLETIONS MANAGER SOFTWARE. PLEASE DO NOT REPRODUCE, COPY OR DISTRIBUTE WITHOUT THE EXPRESS CONSENT OF PETROFOCUS.

MAX. DEVIATION
 ALL DEPTH ARE BORT

© PETROFOCUS 2002